

**SOCS6 Antibody (N-term)**  
**Affinity Purified Rabbit Polyclonal Antibody (Pab)**  
**Catalog # AP14118a****Specification**

---

**SOCS6 Antibody (N-term) - Product Information**

Application	WB, IHC-P,E
Primary Accession	<a href="#">O14544</a>
Other Accession	<a href="#">NP_004223.2</a>
Reactivity	Human
Host	Rabbit
Clonality	Polyclonal
Isotype	Rabbit IgG
Calculated MW	59528
Antigen Region	40-69

**SOCS6 Antibody (N-term) - Additional Information****Gene ID** 9306**Other Names**

Suppressor of cytokine signaling 6, SOCS-6, Cytokine-inducible SH2 protein 4, CIS-4, Suppressor of cytokine signaling 4, SOCS-4, SOCS6, CIS4, SOCS4

**Target/Specificity**

This SOCS6 antibody is generated from rabbits immunized with a KLH conjugated synthetic peptide between 40-69 amino acids from the N-terminal region of human SOCS6.

**Dilution**

WB~~1:1000

IHC-P~~1:10~50

E~~Use at an assay dependent concentration.

**Format**

Purified polyclonal antibody supplied in PBS with 0.09% (W/V) sodium azide. This antibody is purified through a protein A column, followed by peptide affinity purification.

**Storage**

Maintain refrigerated at 2-8°C for up to 2 weeks. For long term storage store at -20°C in small aliquots to prevent freeze-thaw cycles.

**Precautions**

SOCS6 Antibody (N-term) is for research use only and not for use in diagnostic or therapeutic procedures.

**SOCS6 Antibody (N-term) - Protein Information****Name** SOCS6

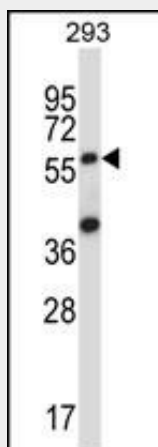
**Synonyms** CIS4, SOCS4

**Function** SOCS family proteins form part of a classical negative feedback system that regulates cytokine signal transduction. May be a substrate recognition component of a SCF-like ECS (Elongin BC-CUL2/5- SOCS-box protein) E3 ubiquitin-protein ligase complex which mediates the ubiquitination and subsequent proteasomal degradation of target proteins (By similarity). Regulates KIT degradation by ubiquitination of the tyrosine-phosphorylated receptor.

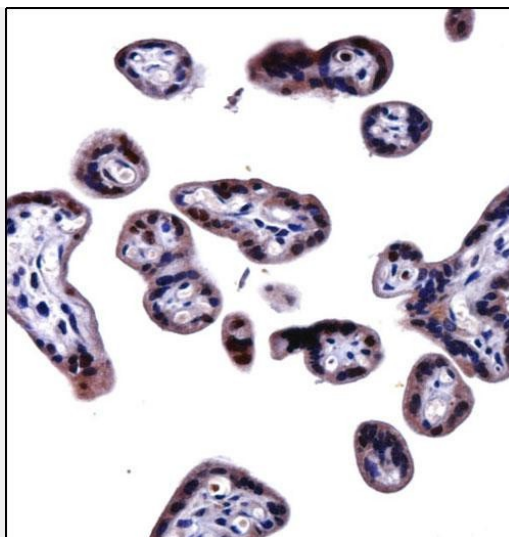
**SOCS6 Antibody (N-term) - Protocols**

Provided below are standard protocols that you may find useful for product applications.

- [Western Blot](#)
- [Blocking Peptides](#)
- [Dot Blot](#)
- [Immunohistochemistry](#)
- [Immunofluorescence](#)
- [Immunoprecipitation](#)
- [Flow Cytometry](#)
- [Cell Culture](#)

**SOCS6 Antibody (N-term) - Images**

SOCS6 Antibody (N-term) (Cat. #AP14118a) western blot analysis in 293 cell line lysates (35ug/lane). This demonstrates the SOCS6 antibody detected the SOCS6 protein (arrow).



SOCS6 Antibody (N-term) (AP14118a) immunohistochemistry analysis in formalin fixed and paraffin embedded human placenta tissue followed by peroxidase conjugation of the secondary antibody and DAB staining. This data demonstrates the use of SOCS6 Antibody (N-term) for immunohistochemistry. Clinical relevance has not been evaluated.

#### **SOCS6 Antibody (N-term) - Background**

The protein encoded by this gene contains a SH2 domain and a CIS homolog domain. The protein thus belongs to the cytokine-induced STAT inhibitor (CIS), also known as suppressor of cytokine signaling (SOCS) or STAT-induced STAT inhibitor (SSI), protein family. CIS family members are known to be cytokine-inducible negative regulators of cytokine signaling. The expression of this gene can be induced by GM-CSF and EPO in hematopoietic cells. A high expression level of this gene was found in factor-independent chronic myelogenous leukemia (CML) and erythroleukemia (HEL) cell lines.

#### **SOCS6 Antibody (N-term) - References**

Bailey, S.D., et al. Diabetes Care (2010) In press :  
Rose, J.E., et al. Mol. Med. 16 (7-8), 247-253 (2010) :  
Choi, Y.B., et al. J. Biol. Chem. 285(10):7271-7280(2010)  
Lai, R.H., et al. Gene 448(1):64-73(2009)  
Talmud, P.J., et al. Am. J. Hum. Genet. 85(5):628-642(2009)